

A collage of various young people, mostly of diverse ethnicities, smiling and looking in different directions. The images are arranged in a grid-like fashion, with some overlapping. The overall tone is positive and inclusive.

High Risk Populations: Youth Frequent Behavioral Health ED Visitors

Child Quality & Access Committee
June 17, 2015

Acknowledgements



OVERVIEW

Data Sources and Methodology

Emergency Department (ED) Use for Behavioral Health (BH) Services

- High Utilizers (Top 10%)
- Frequent Visitors (Top 2%)
- Characteristics of Frequent Visitors
- Frequent Visitor High Volume EDs
- New Measures:
 - % of BH ED Visits by Frequent Visitors
 - BH ED Readmission Rates within 7 & 30 Days
 - BH ED Connect to Care Rates within 7 & 30 Days
- Next Steps

THE BASICS

Medicaid Members

- Youth ages 3-17

Includes all youth Medicaid members in volume Information

Excludes youth who are dually eligible for Medicaid and Medicare for measures involving connect to care and readmission rates

For youth, all measures based on Medicaid claims data from 2012 & 2013

Use of Descriptive Statistics



Definitions

Behavioral Health (BH) ED Visits include:

- ED Visits with Primary and/or Secondary BH Diagnosis

BH ED High Utilizers

- Top 10% of BH ED Users
- Measured over a calendar year
- Youth : 3 or more BH ED visits

BH ED Frequent Visitors

- Top 2% of BH ED Users
- Measured in 6 month intervals
- Youth: 4 or more visits



Three Basic Questions

1. What are the patterns of frequent ED Use?
2. What are the characteristics of frequent visitors that are persistent vs. episodic in their pattern of use?
3. How do hospitals differ in their rates of the % visits accounted for by BH ED Frequent Visitors, and Connect to Care & Readmission Rates?



2013 Medicaid Youth BH ED Users

	# of Unique Youth BH ED Visitors	# of BH ED Visits
All BH ED Visits by Medicaid Youth (1+ BH ED visit in 12 months of 2013)	7,120	11,181
Top 10% Youth BH ED Visitors (3+ visits in 12 months of 2013)	936	3,961
Top 2% : Frequent Visitors (4+ visits in 6 months) 7/13-12/13	140	675



2013 YOUTH FREQUENT VISITORS: DEMOGRAPHIC SUMMARY

	Youth BH ED Frequent Visitor (FV) Demographic Profile: Index Period BH ED FREQUENT VISITORS (top 2%)
# of Unique Youth	140
Range of # BH ED Visits	4-17
EDs Visited	50.0% visited 1 ED 8.6% visited 3 or more
DCF-Involvement	DCF Involved (48.6%)
Gender	Female (59.3%)
Age	Average age: 13.6 y.o. 27.9% 3-12 y.o.'s 72.1% 13-17 y.o.'s
Race/Ethnicity	Caucasian (45.0%) African-American (21.4%) Hispanic (32.1%)



2013 YOUTH FREQUENT VISITORS: NUMBER OF ED FACILITIES VISITED

Number of ED Facilities	Prior 6-Months (January 1-June 30, 2013)		Index Period (July 1-December 31, 2013)		Following 6-Months (January 1-June 30, 2014)	
	#	%	#	%	#	%
0	53	37.9%	0	0.0%	47	33.6%
1	69	49.3%	70	50.0%	70	50.0%
2	16	11.4%	56	40.0%	17	12.1%
3+	2	1.4%	14	10.0%	6	4.3%
Total	140	100.0%	140	100%	140	100%

Among Frequent BH ED Visitors during the index 6-month period, most youth (90%) visited one or two EDs.

2013 YOUTH FREQUENT VISITORS: PERSISTENT VS. EPISODIC FREQUENT BH ED VISITORS

	# Youth Frequent Visitors	Denominator	% Youth Frequent Visitors
Index Cohort during Prior 6-months: Jan 2013 to Jun 2013	28	140	20.0%
Index 6-months: Jul 2013 to Dec 2013	140	140	100.0%
Index Cohort during Following 6-months: Jan 2014 to Jun 2014	23	140	16.4%

Most BH Frequent Visitors to the ED did not meet the threshold for frequent visiting in the six months prior to the index period, or in the six months following the index period.

- Only 6 of the 140 Youth Frequent Visitors during the index period were also Frequent Visitors during both the 6 month period before and after the index period

2013 YOUTH EPISODIC VS. PERSISTENT FREQUENT VISITORS

Episodic Frequent Visitors (FVs)

The majority of youth (83.6%; 117/140) did not continue to meet the threshold for FVs in the 6-months after the index period.

Persistent FVs

16.4% (23/140) of youth continued to be FVs in the 6 months following the index period

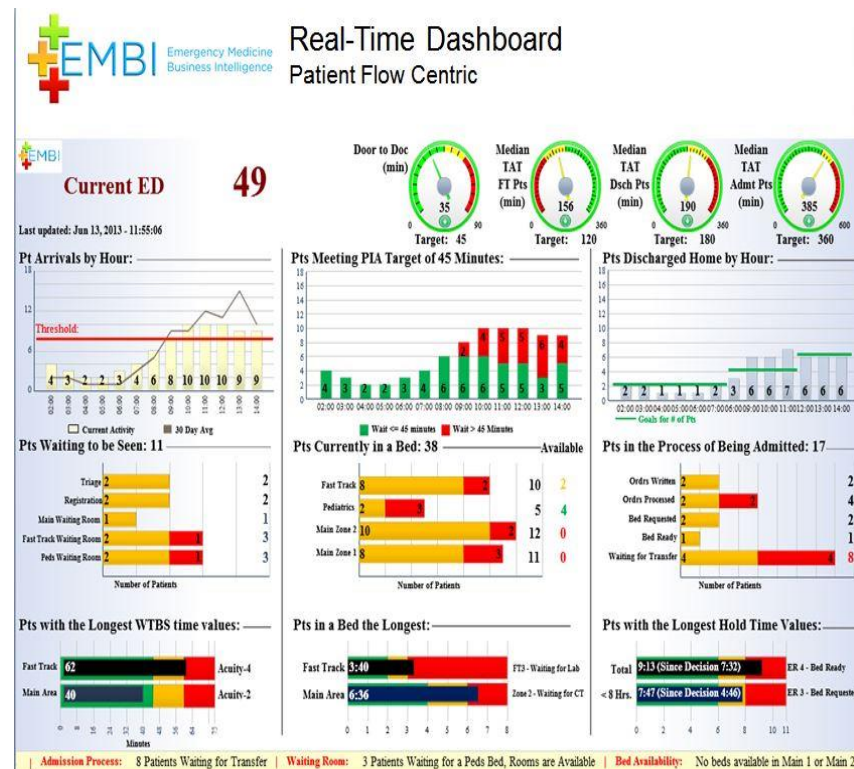


NEWLY DEVELOPED HOSPITAL BH ED MEASURES

% of BH ED Visits
accounted for by
Frequent Visitors

% of BH ED 7 & 30-Day
Readmissions

BH ED 7 & 30-Day
Connection to Care
Rates



YOUTH BH ED VISITS BY FREQUENT VISITORS

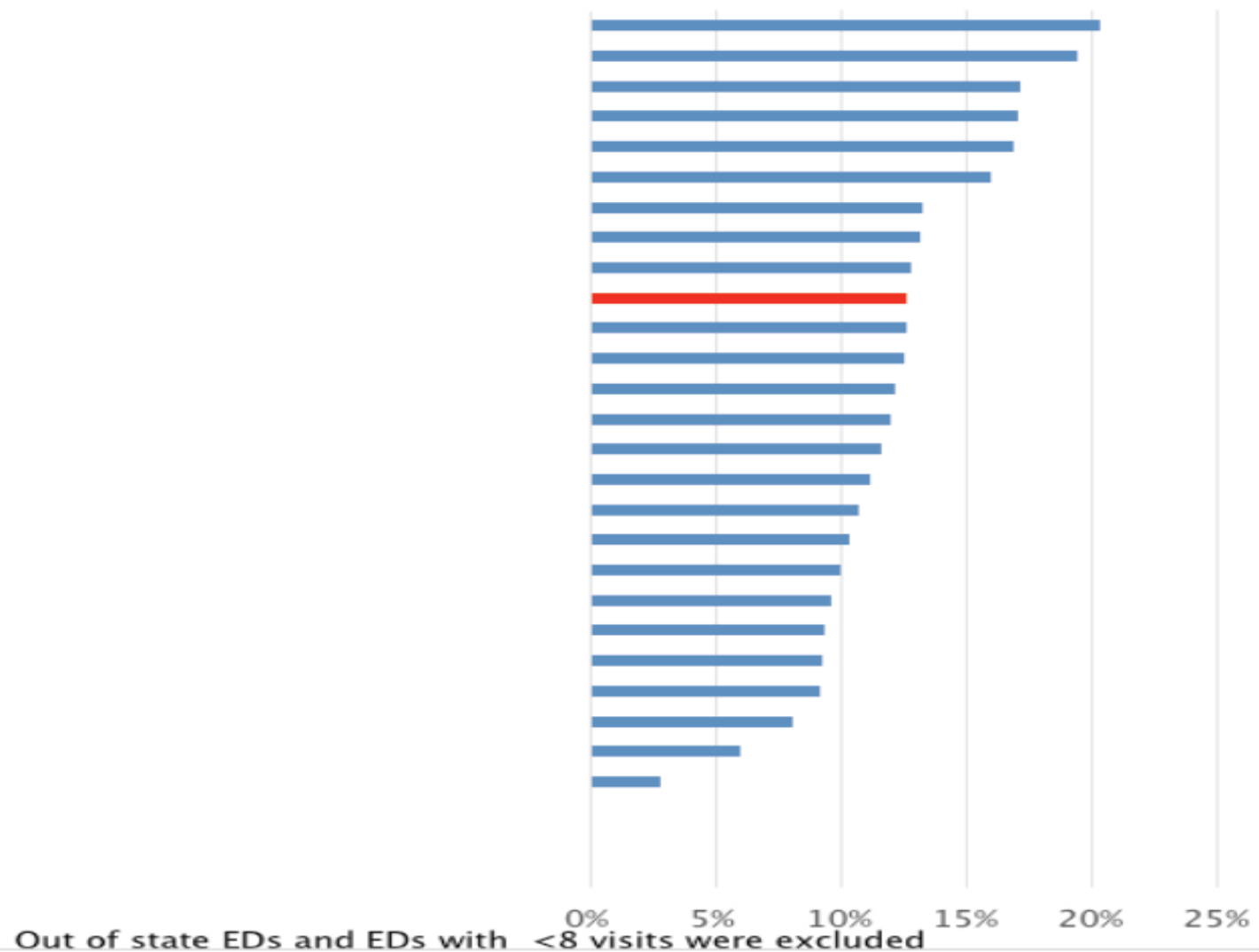
TOP TEN HOSPITALS: 7/13- 12/13

HOSPITAL NAME	TOTAL BH ED VISITS	BH ED VISITS BY FREQ VISITORS	% BH ED VISITS BY FREQ VISITORS	UNIQUE FREQ VISITORS	UNIQUE ED VISITORS	% FREQ VISITORS
CONNECTICUT CHILDRENS MEDICAL CENTER	1405	240	17.08	66	1024	6.45
THE WILLIAM BACKUS HOSPITAL	580	77	13.28	20	403	4.96
YALE NEW HAVEN HOSPITAL	727	70	9.63	21	572	3.67
LAWRENCE AND MEMORIAL HOSPITAL	186	36	19.35	8	134	5.97
THE CHARLOTTE HUNGERFORDHOSPITAL	188	30	15.96	9	147	6.12
ST MARYS HOSPITAL	258	30	11.63	10	213	4.69
WATERBURY HOSPITAL	148	25	16.89	8	116	6.90
THE HOSPITAL OF CENTRAL CONNECTICUT	198	24	12.12	10	156	6.41
ST VINCENTS MEDICAL CENTER	193	20	10.36	9	150	6.00
MIDDLESEX HOSPITAL	135	17	12.59	6	113	5.31

- CCMC had the highest volume of Youth BH ED visits as well as the highest volume of unique ED Visitors, unique Frequent Visitors and BH ED visits by Frequent Visitors
- Lawrence & Memorial Hospital had the highest % of BH ED visits by Frequent Visitors (19.35%)
- Yale New Haven Hospital had the second highest volume of BH ED visits but had the lowest % of BH ED visits by Frequent Visitors

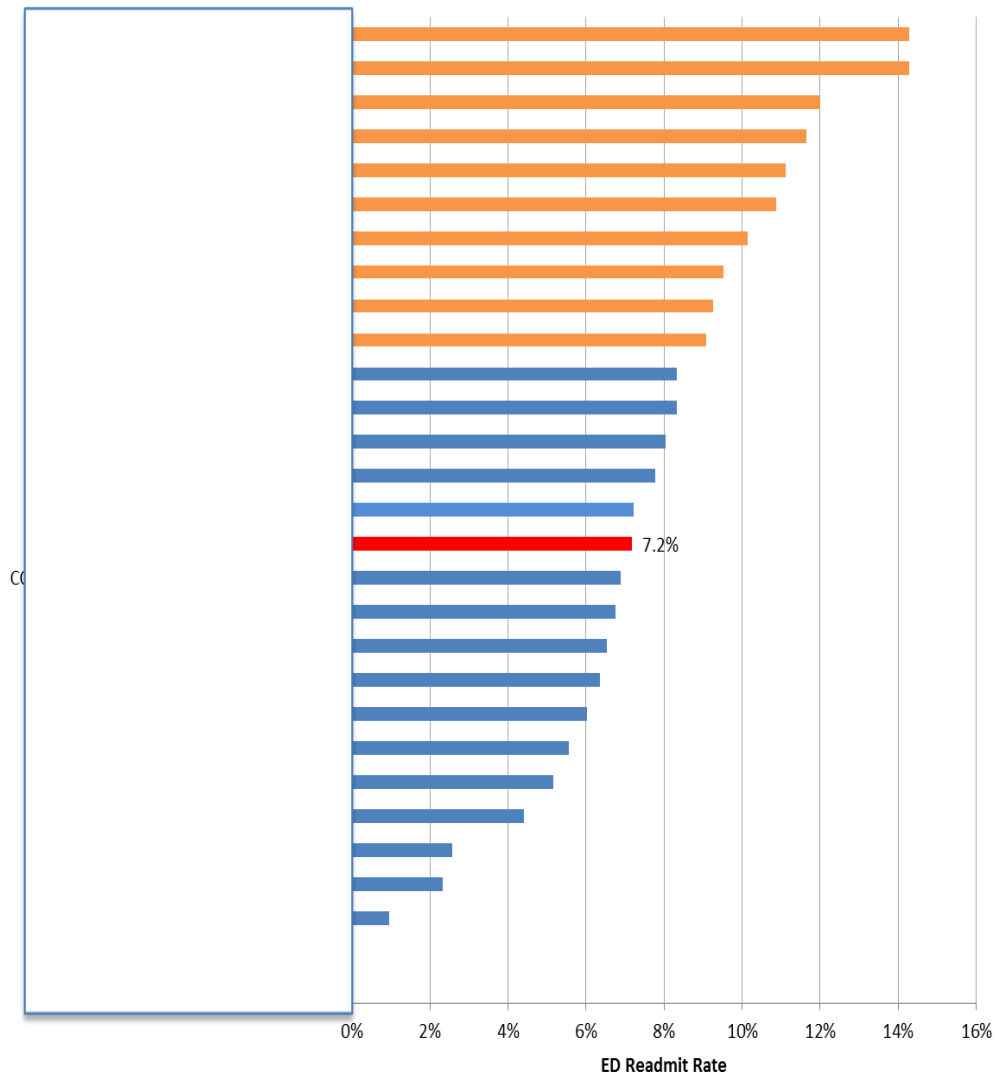
% of BH ED VISITS ACCOUNTED FOR BY FREQUENT VISITORS

% of Total YOUTH BH ED Visits by Frequent Visitors

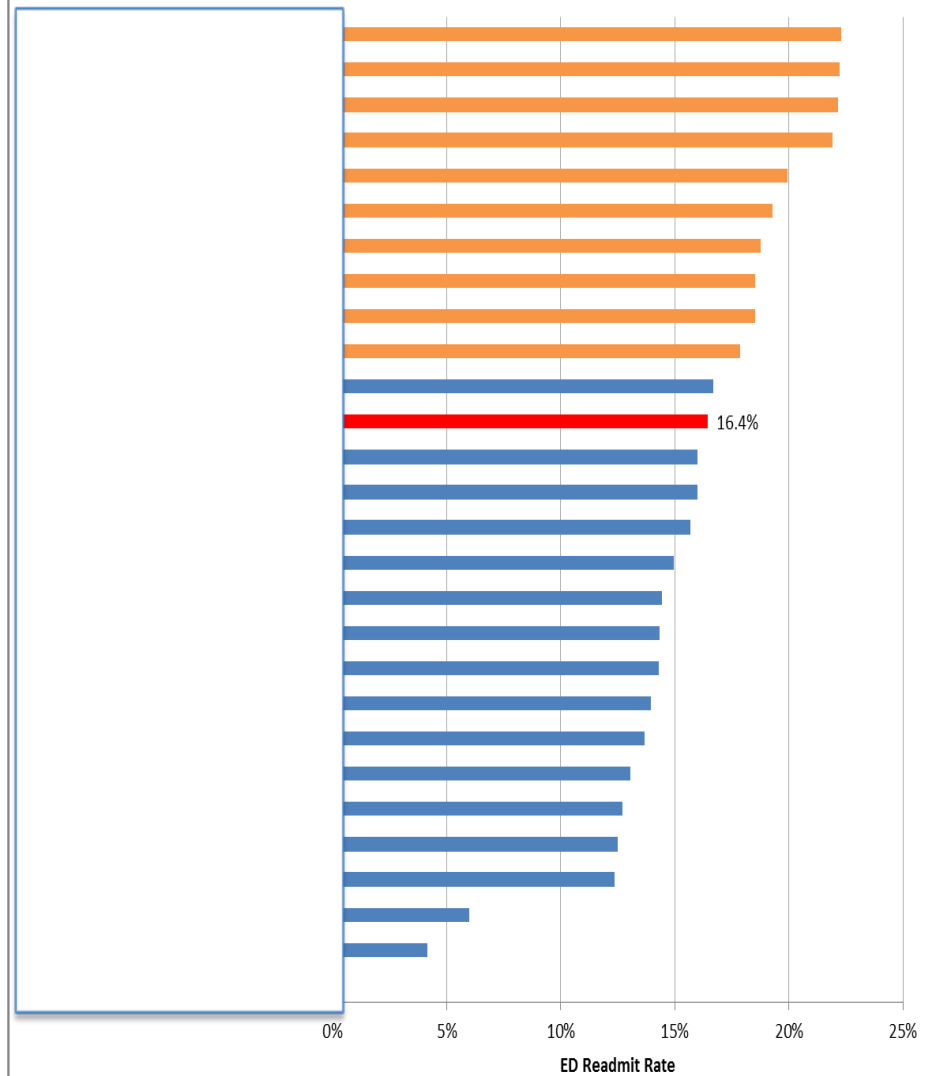


7 & 30 DAY BH ED READMIT RATES: ALL YOUTH: Q3 & Q4 2013

7 Day ED Readmit Rates
Youth: Q3 & Q4 2013



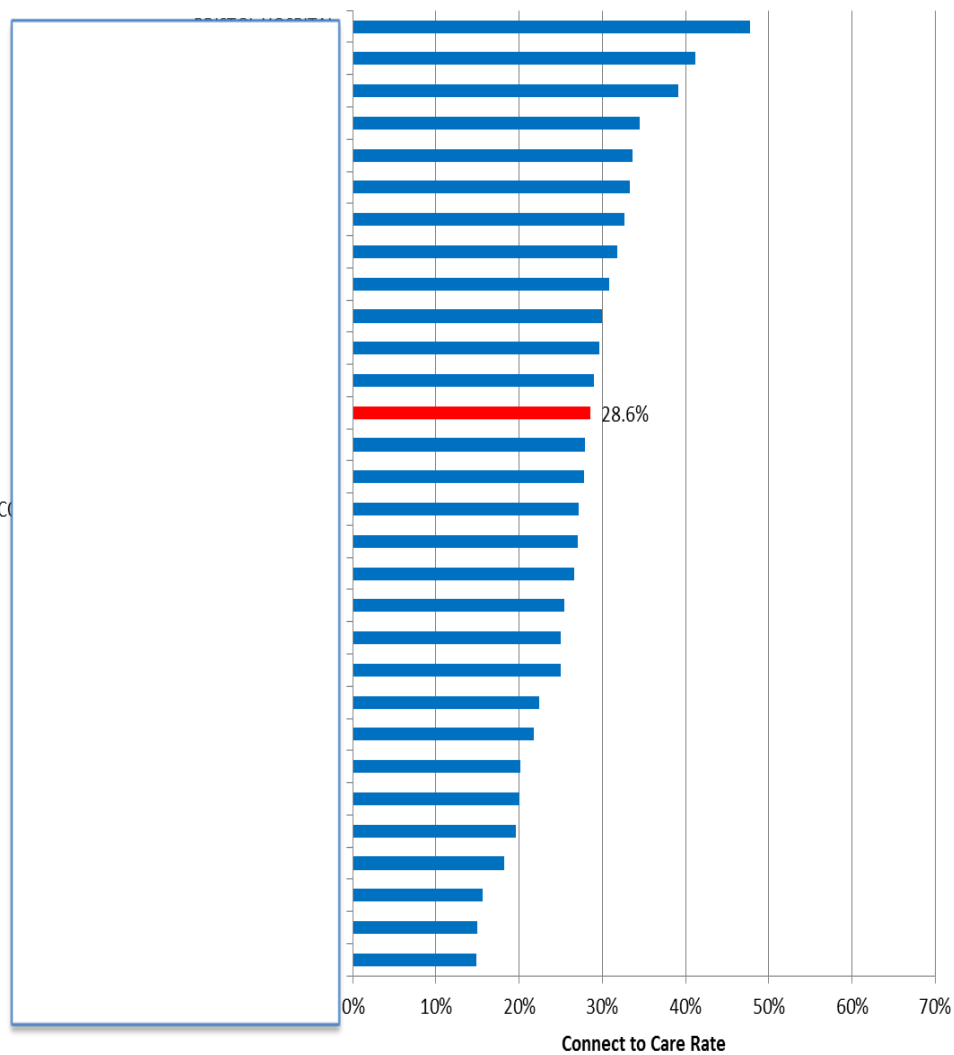
30 Day ED Readmit Rates
Youth: Q3 & Q4 2013



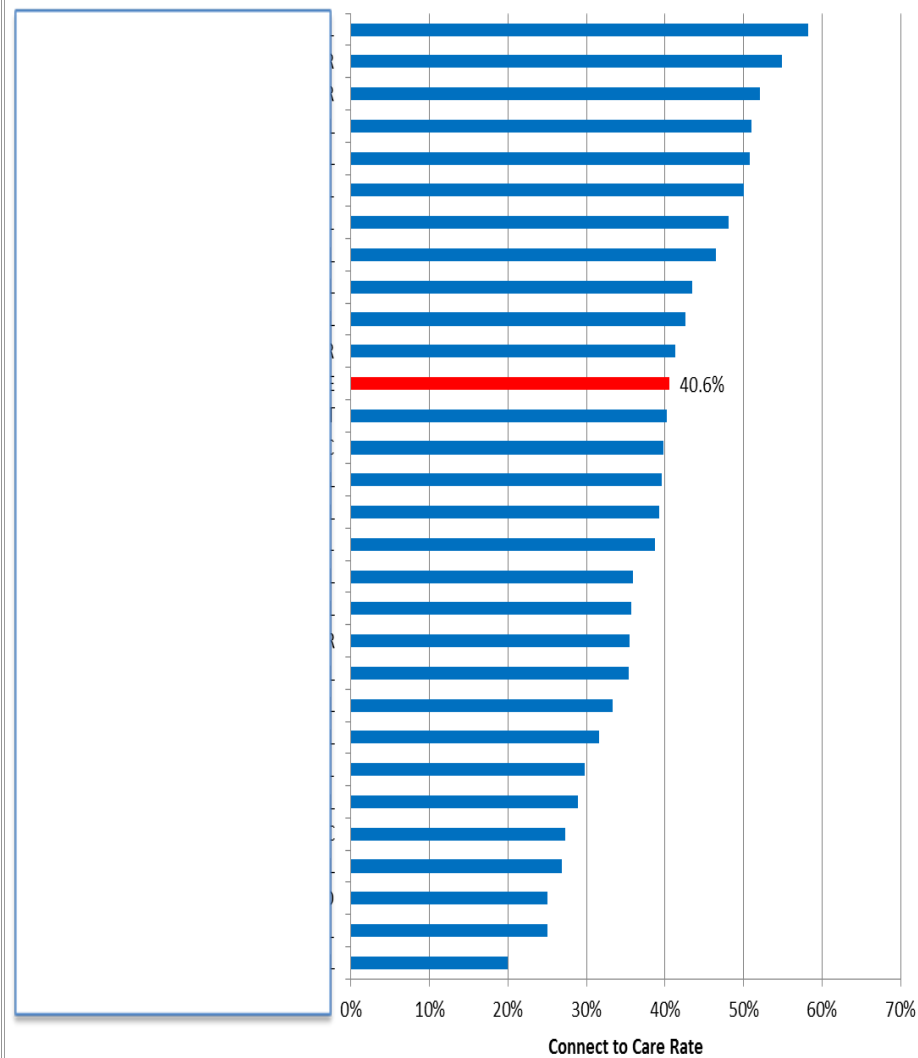
7 & 30 DAY BH ED CONNECT TO CARE RATES

ALL YOUTH: Q3 & Q4 2013

7 Day ED CTC Rate - All Youth
Q3 & Q4 2013



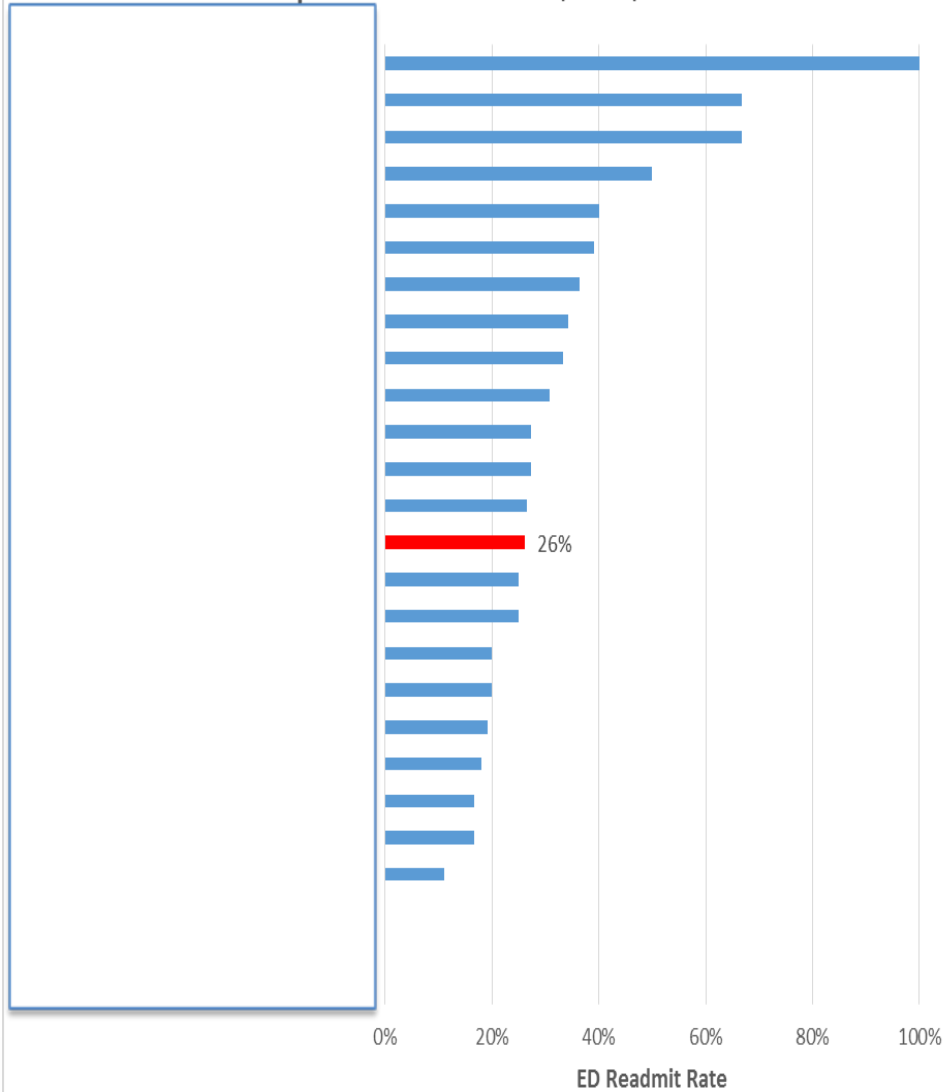
30 Day ED CTC Rate - All Youth
Q3 & Q4 2013



7 & 30 DAY BH ED READMIT RATES BY HOSPITAL

YOUTH BH ED FREQUENT VISITORS: Q3 & Q4 2013

7 Day ED Readmit Rates
Frequent Visitor Youth: Q3 & Q4 2013



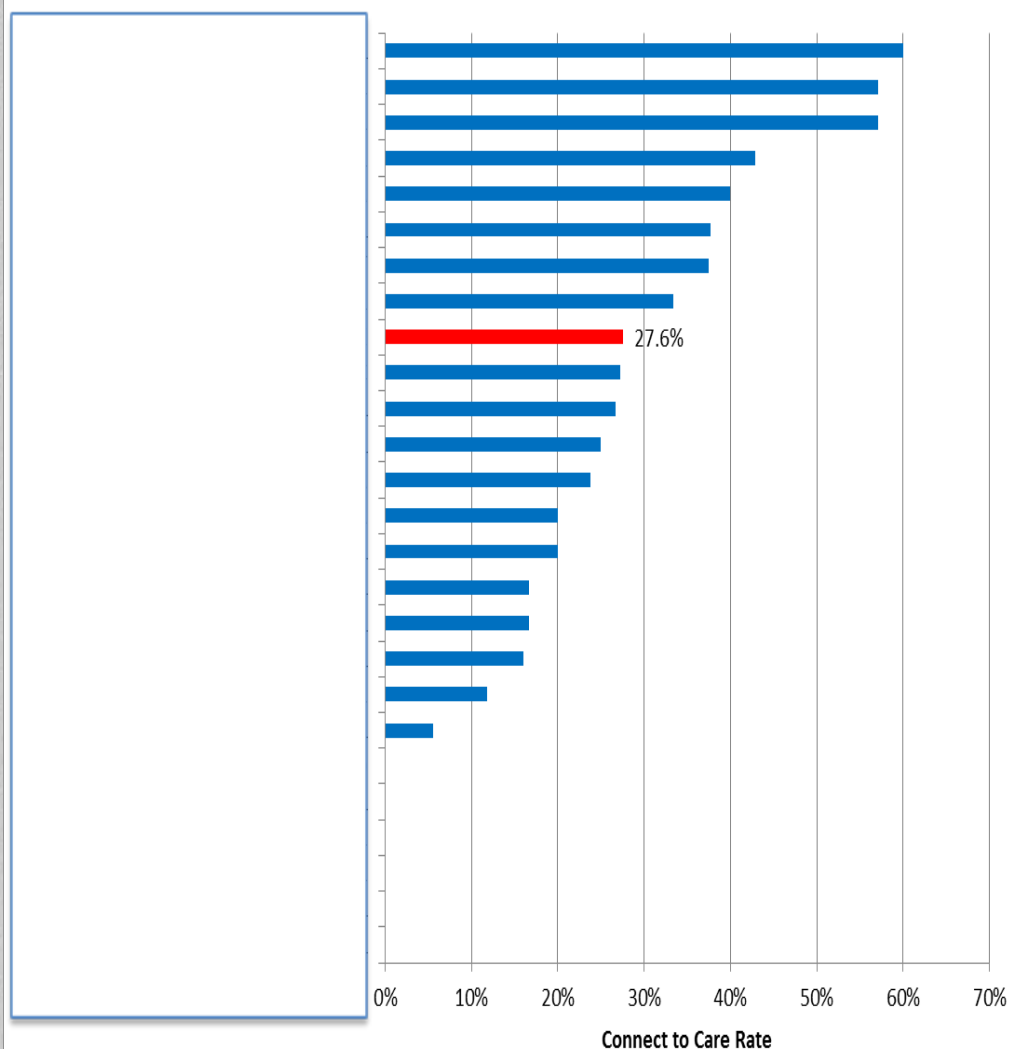
30 Day ED Readmit Rates
Frequent Visitor Youth: Q3 & Q4 2013



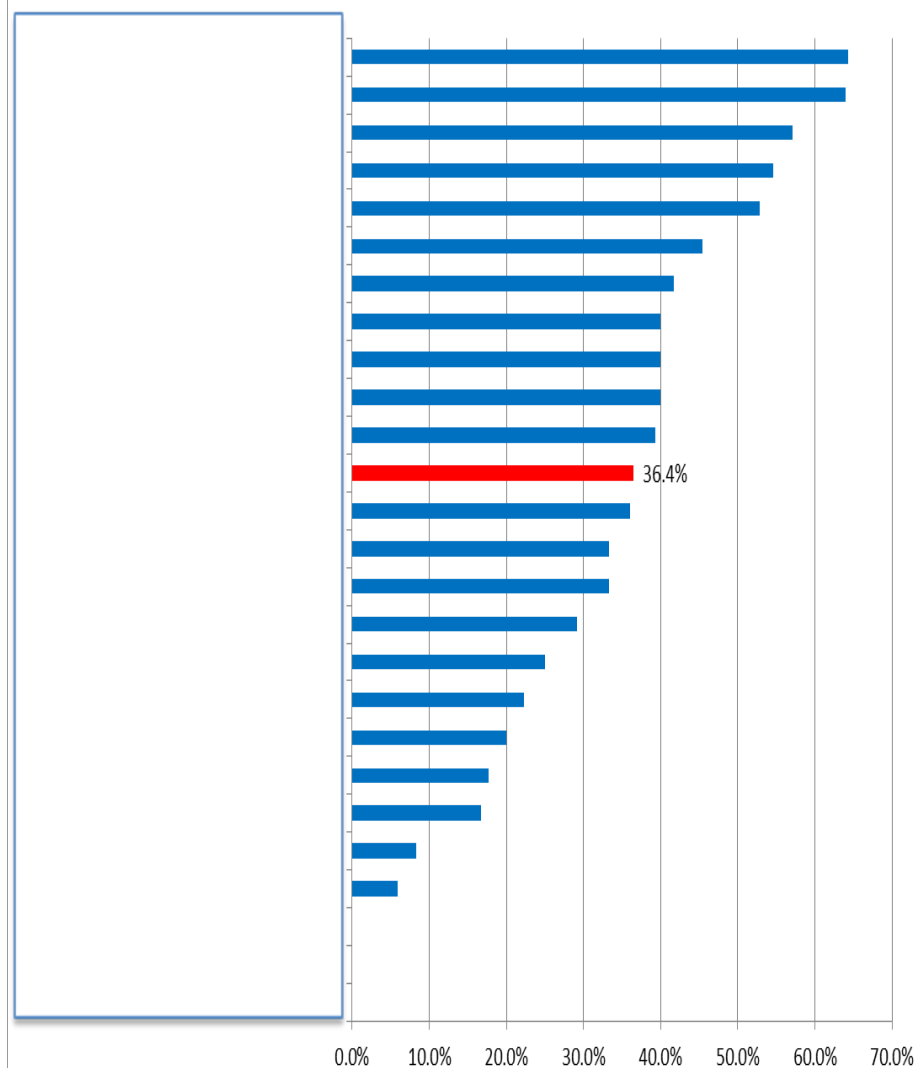
7 & 30 DAY BH ED CONNECT TO CARE RATES

YOUTH BH ED FREQUENT VISITORS: Q3 & Q4 2013

7 Day ED CTC Rate - Youth Frequent Visitors
Q3 & Q4 2013



30 Day ED CTC Rate - Youth Frequent Visitors
Q3 & Q4 2013



Next Steps

- **Further Study of Episodic and Persistent Frequent Visitors**
- **Develop Predictive Algorithm**
- **Use new measures in a performance improvement program**
- **Track DCF-Involved FVs**
- **Consider CCTs at hospitals with larger ED volumes**



